

MODELING STREET RUNNING



Presented by: Ron Poidomani

Outline

- Street Running Locations (Global)
- Reasons why do rails run in streets
- Using Prototype Pictures for modeling reference
- Model Examples
- Modeling Techniques
- Technique 1- using Easy Sand go.
- Technique 2- using matt board and styrene.

Street Running Locations



Worldwide Locations

- Argentina
- Australia
- Austria
- Brazil
- Canada
- Germany
- Hong Kong
- India
- Indonesia
- Ireland
- Italy
- Japan
- Laos
- New Zealand
- Peru
- Portugal
- Serbia
- Switzerland
- Taiwan
- Thailand
- United Kingdom
- United States
- Uzbekistan

Austria



Indonesia



New Zealand



United States Locations

















Using Prototype Photos



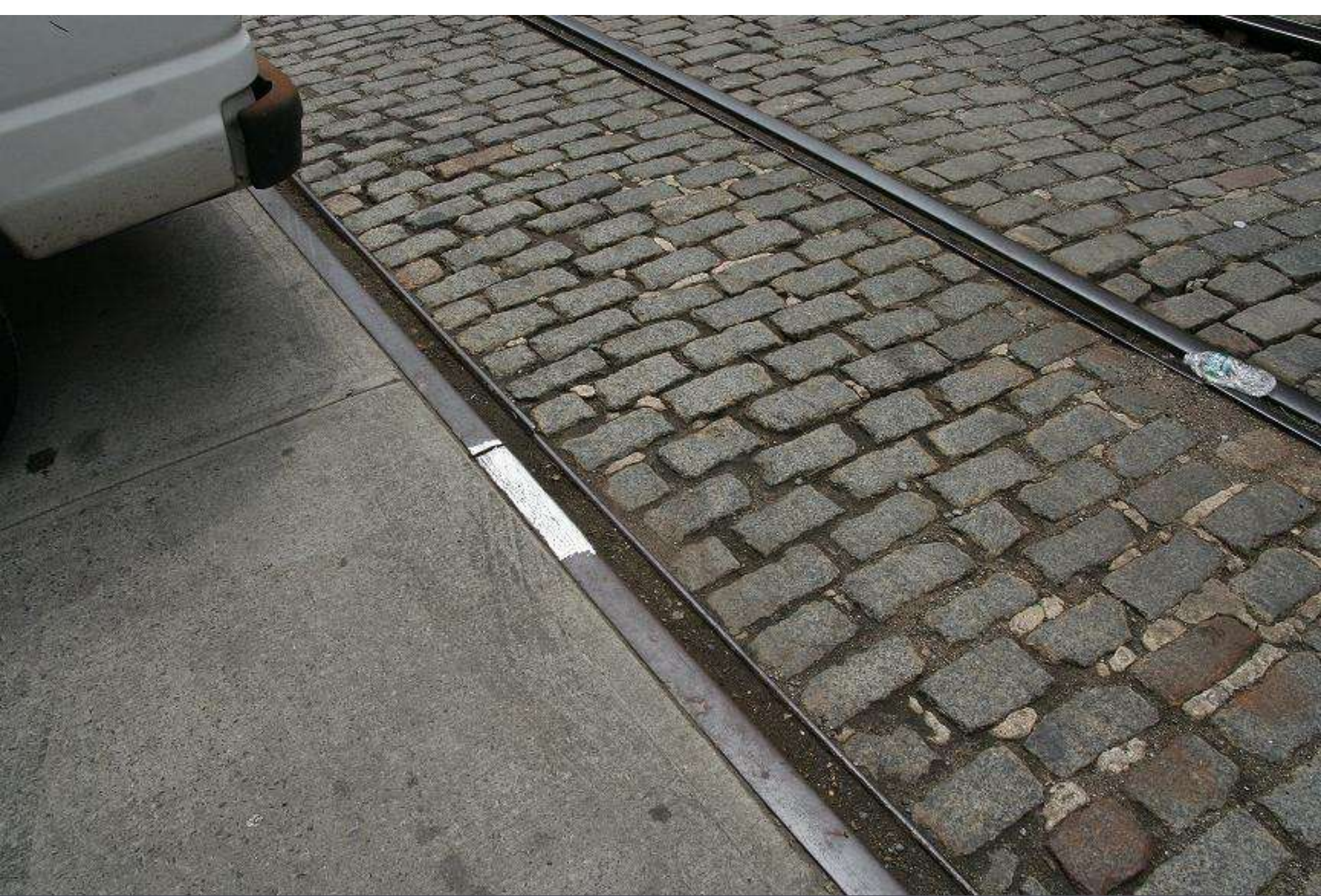


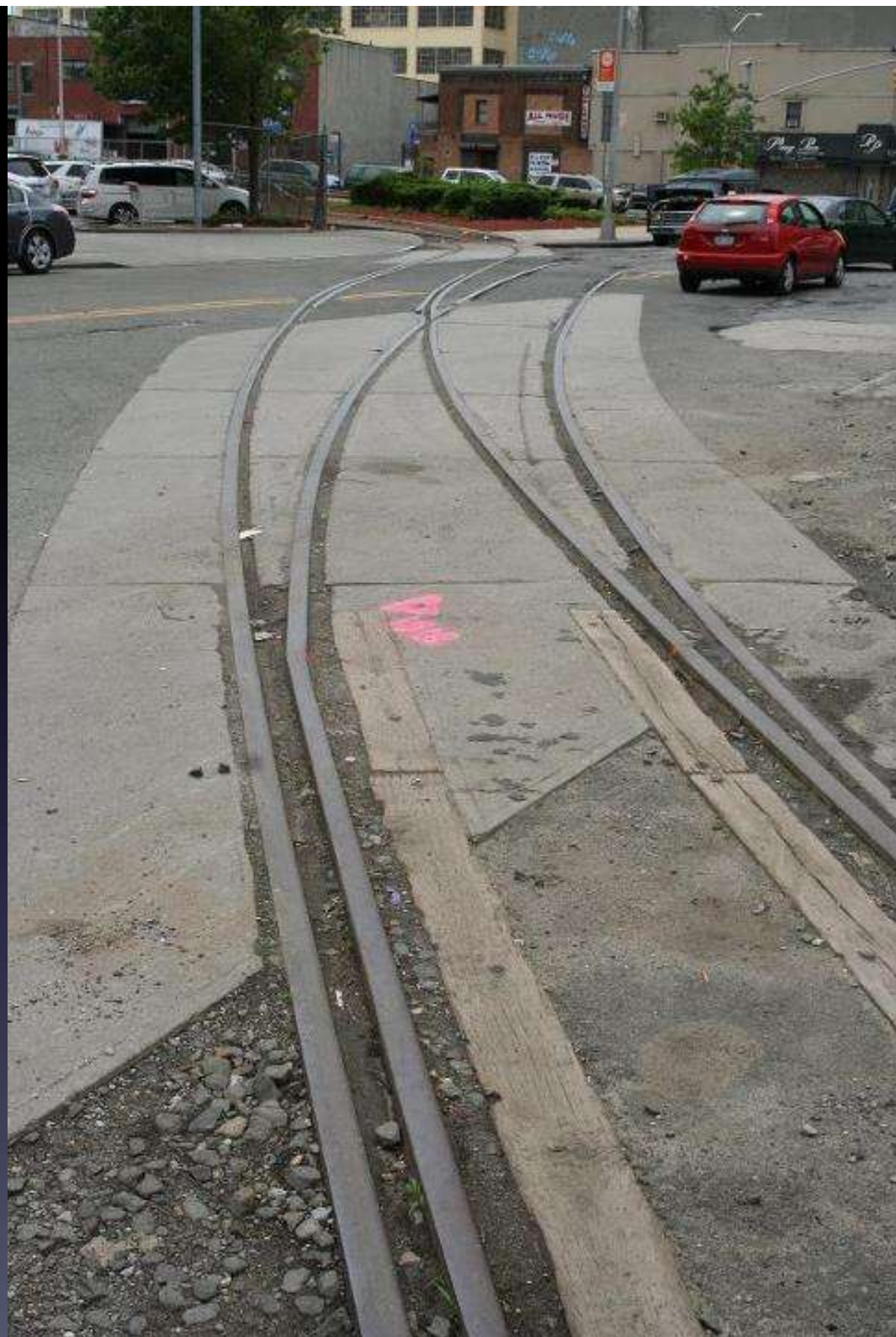


























Why have have tracks in the
street?

Because its cool to model



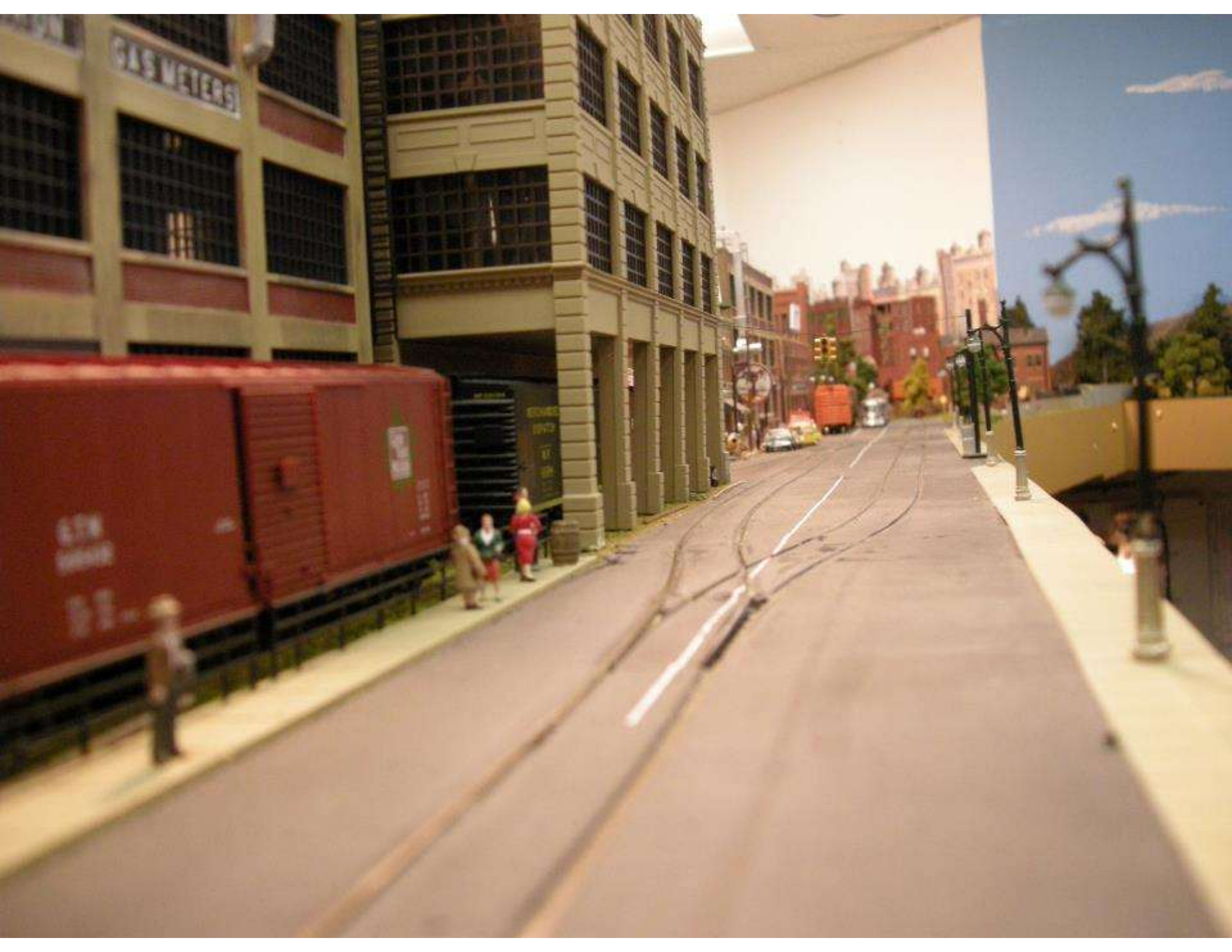
Why have tracks in the street?

- Possibly in urban areas there are not much room for a traditional right of way.
- Development, topography, and other obstacles limit rail access.
- Could be that the railroad acquired a old traction railroad company that had their tracks in area streets.
- For some industries; this could be the only way to gain access for rail service.

MODELING EXAMPLES













3 SPACE SAVING LAYOUTS • 100% HIGHLIGHT

Model Railroader

Build this switching layout
Boston's Union Freight Railroad



About the Author

John Pryke has been a model railroader ever since he received his first train set in 1944. Over the years he has worked with nearly every scale and has modeled many different prototype railroads from a variety of time periods and settings. A native of New York City, John has years of watching railroads at work in the nation's largest metropolis, making him the ideal author for this book on the subject of building an urban environment for your model railroad.

After graduating from the Massachusetts Institute of Technology (MIT) in 1962, John made his career in marketing, sales, and product development in the computer industry and has now retired to a western suburb of Boston. He continues to build and improve his fifth layout, a large basement-sized model railroad based on the New Haven Railroad as it appeared in urban and rural New England in September, 1948. John's work on this layout has appeared almost exclusively in the pages of *Model Railroader* magazine since it was introduced as a feature story in the January 1982 issue.

When John is not working on his model railroad, presenting a model railroading clinic, or teaching an adult education course, you can find him spending time with his wife, Sandy, their grown children and grandchildren.

Building City Scenery for Your Model Railroad
© 2000, Kalmbach Publishing Co.

Photos courtesy of *Model Railroader* magazine

Tony Koester plans a new layout
Foldout special: 3-unit well car
How to improve your turnouts

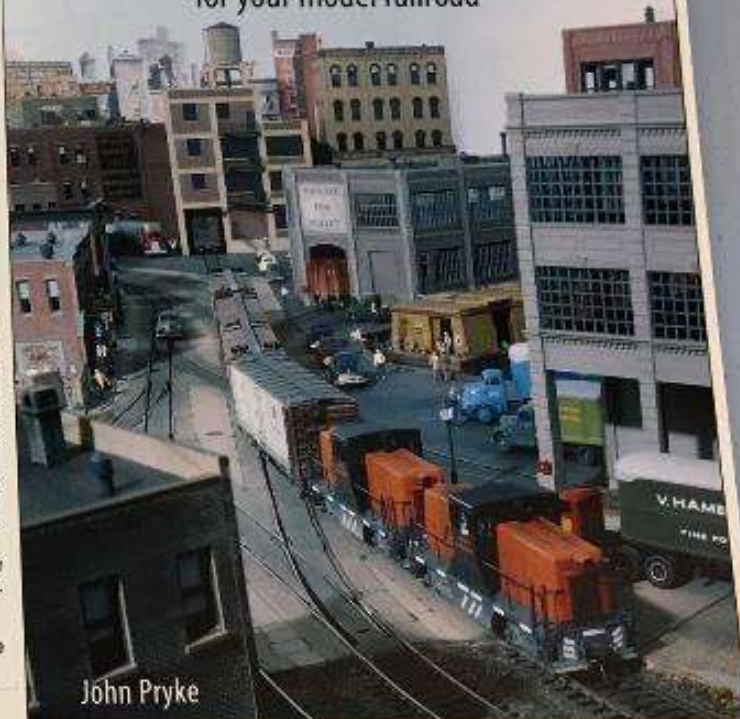
www.modelrailroader.com



Model Railroader BOOKS

BUILDING CITY SCENERY

for your model railroad

















Modeling Techniques

Technique #1

- **ITEMS NEEDED:**
- Matt Board or Task board
- .040 Styrene
- Easy Sand go Wall compound
- Black craft paint for tinting and various craft paint for dry brushing
- Foam tape or strip wood for making forms
- Duct or Gorilla tape and blue painters tape.
- Paint brushes and make-up applicators.
- Weld Bond Glue
- Hobby Knife (#11 blade) or specialty tool
- Metal Ruler
- Artist Spatula or putty knife
- AK Terrains Asphalt
- A&I Dark Wash
- Weathering Powders
- Ground Cover (optional)

Easy SandTM

90

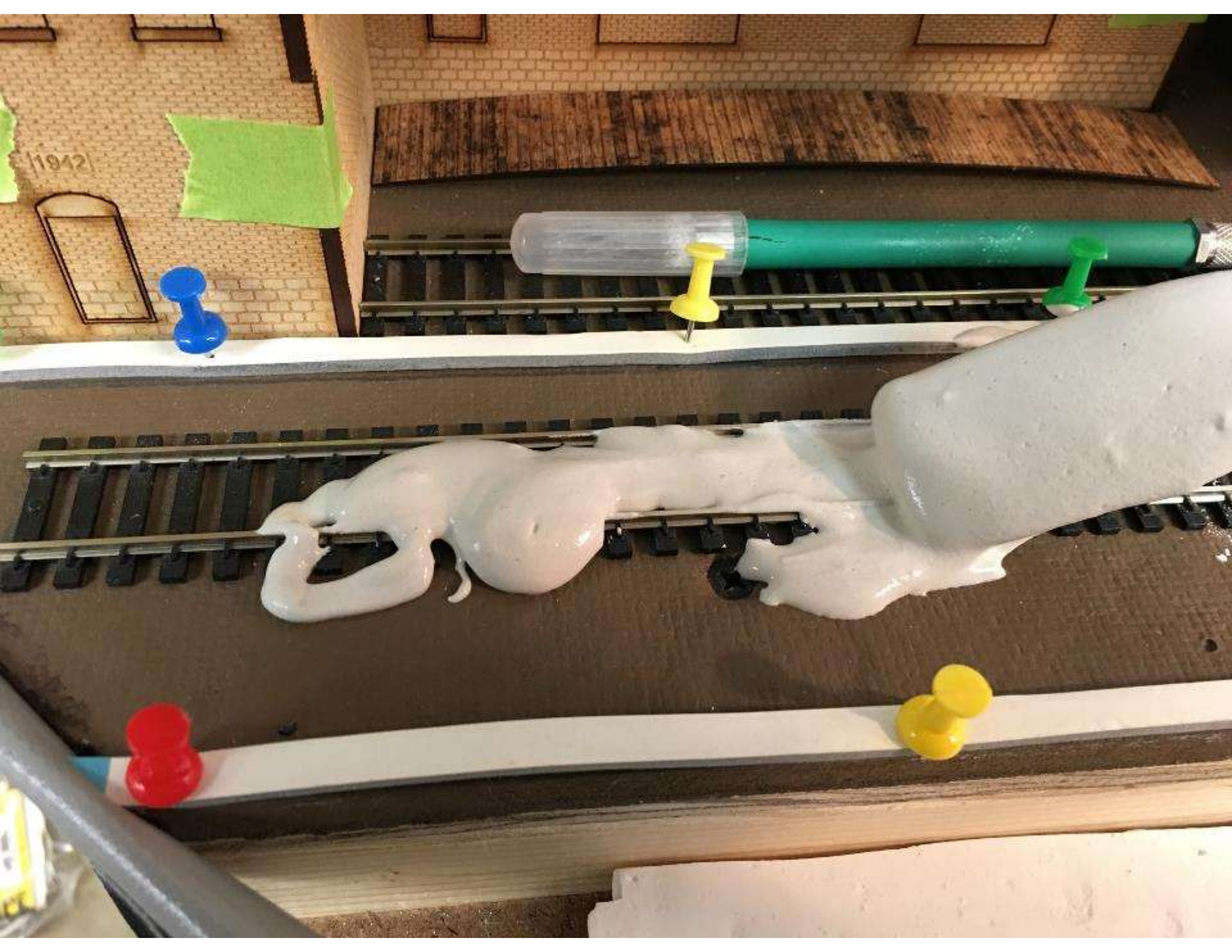
For Finishing Drywall Joints.
Ideal for Patching Interior Drywall
and Plaster Surfaces.

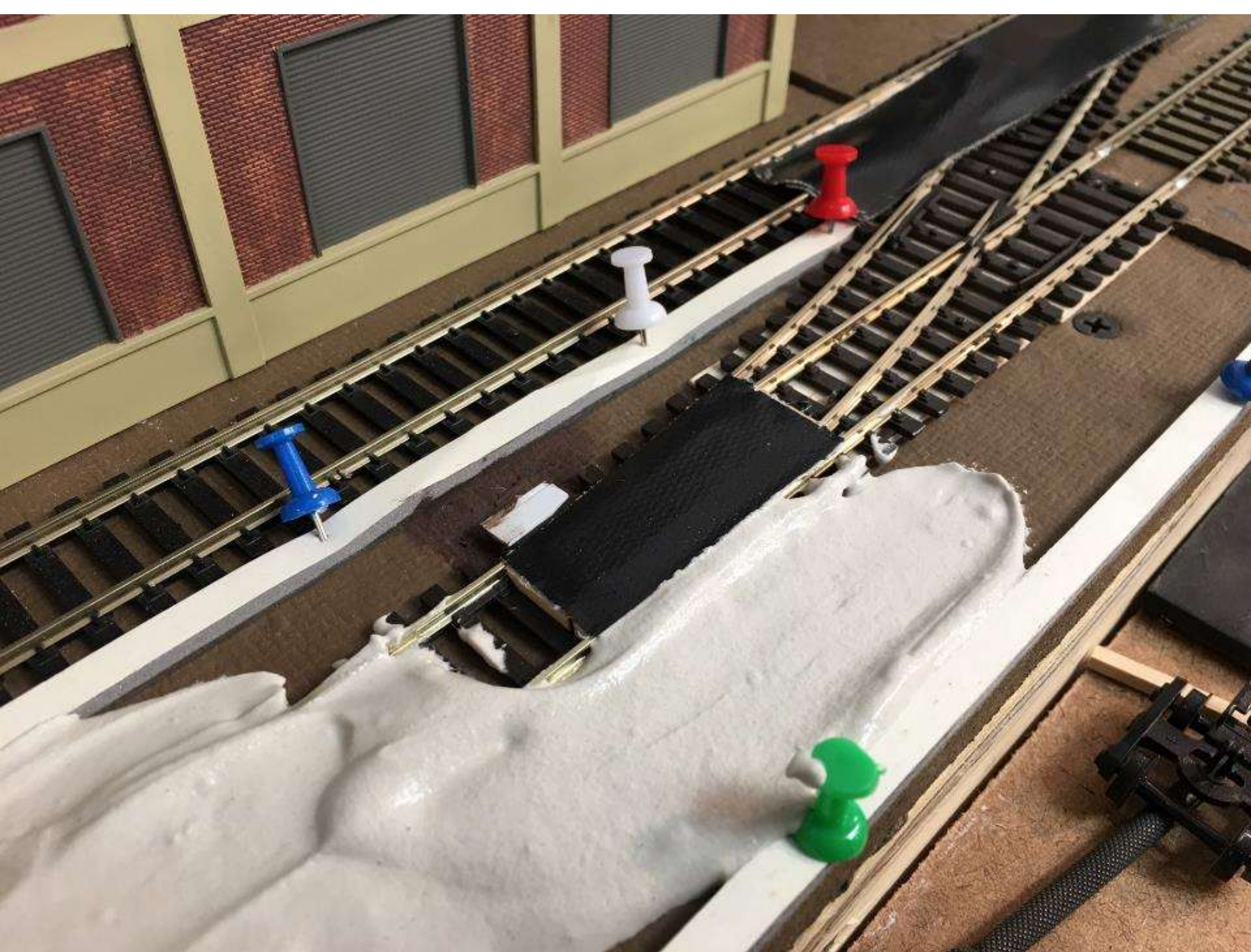


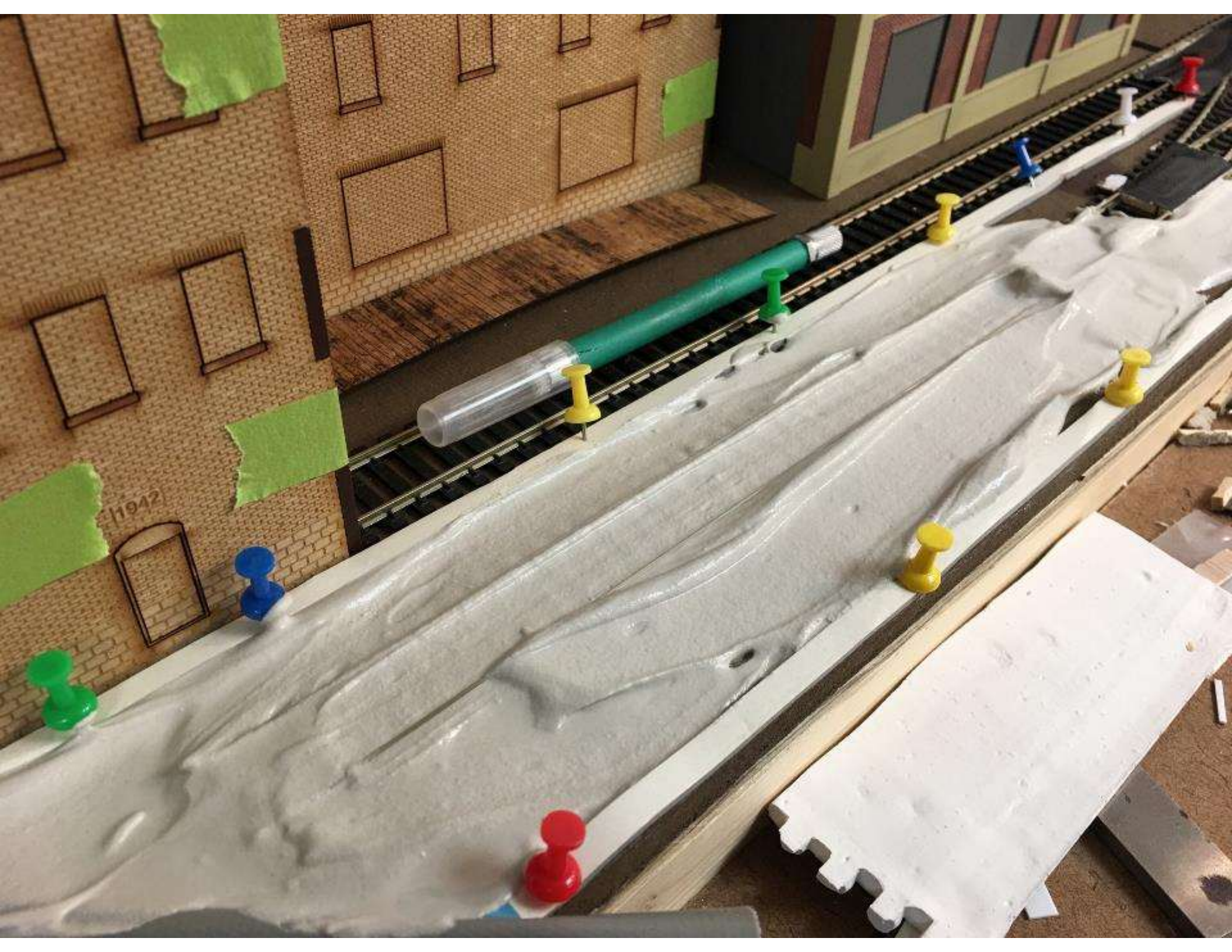






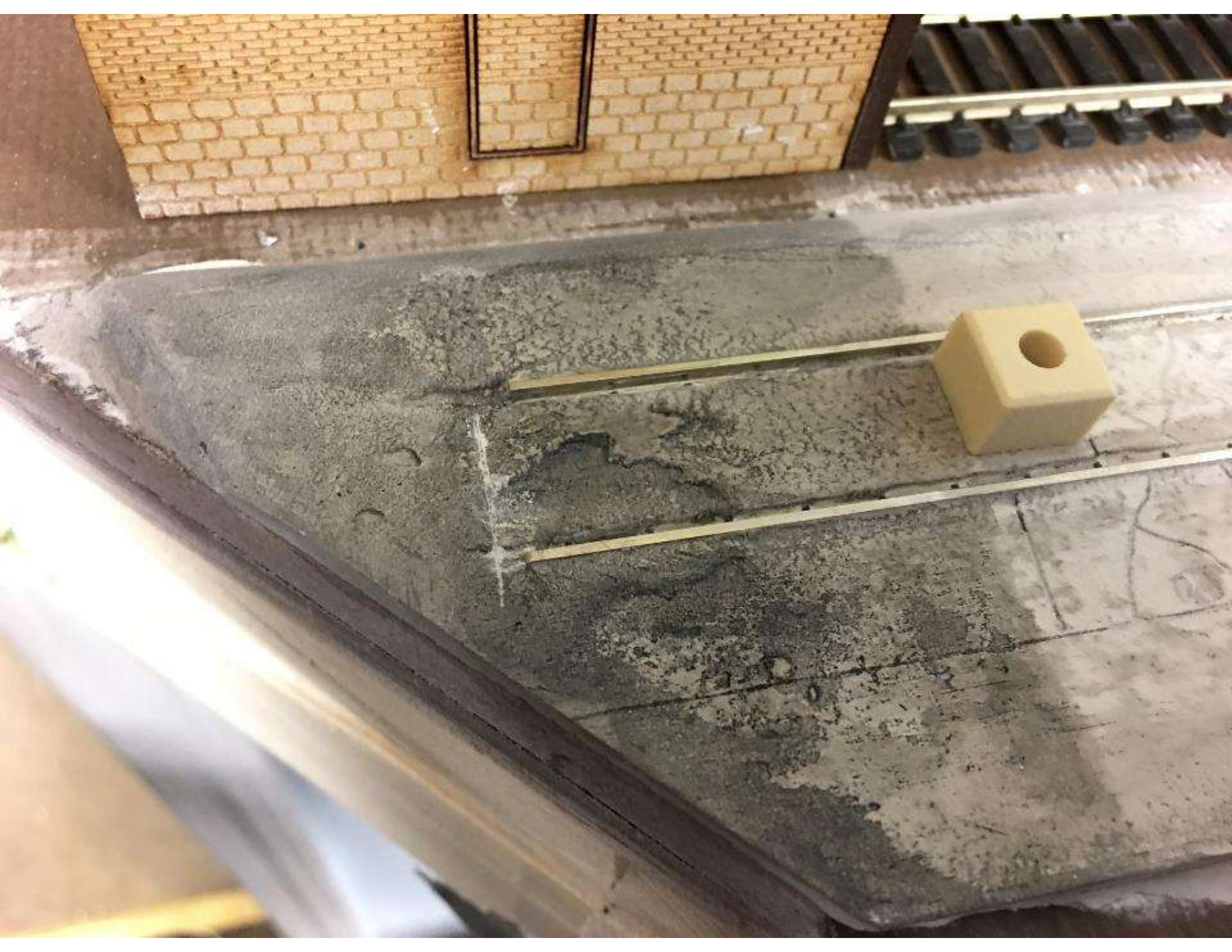




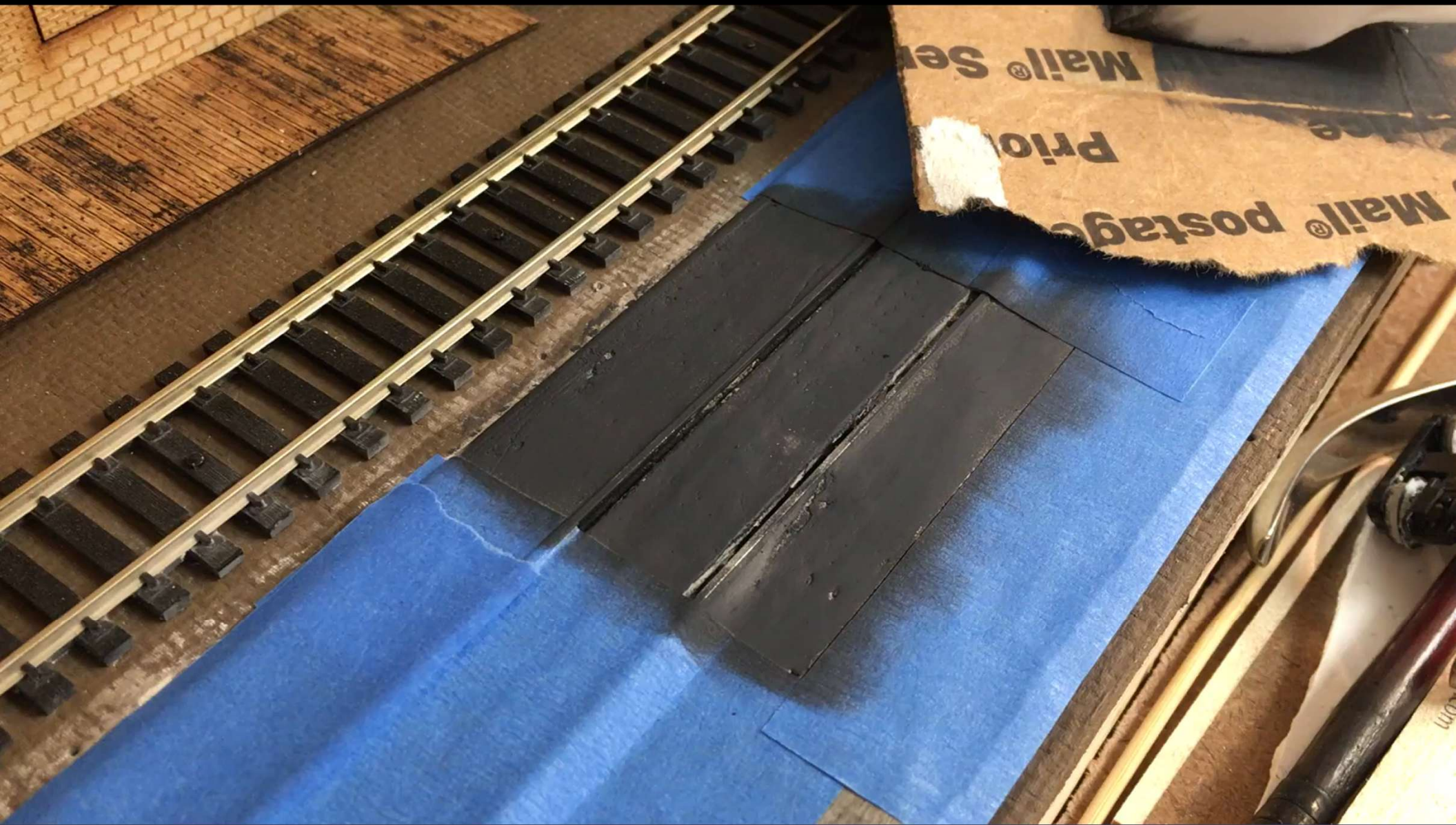


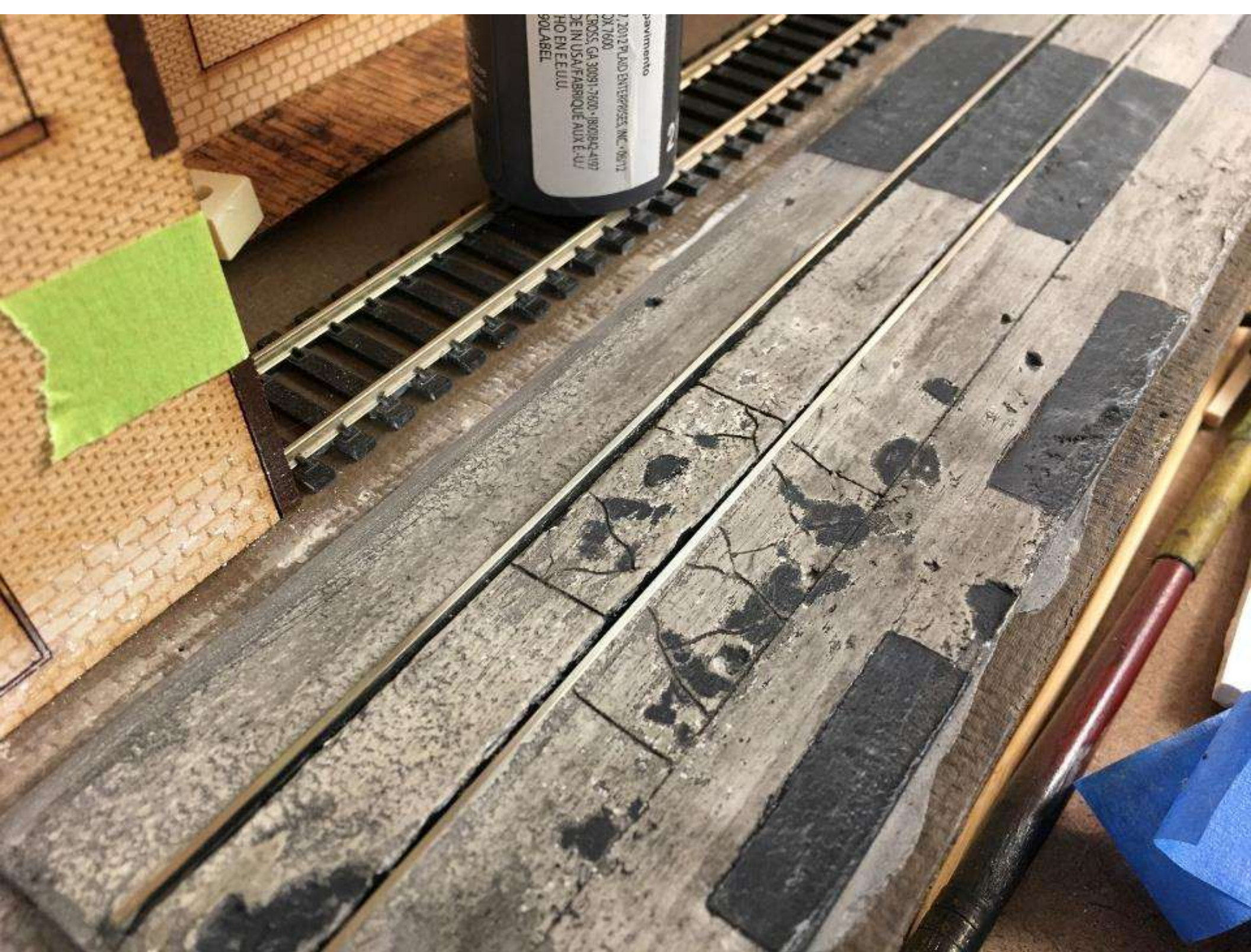


[illegible]

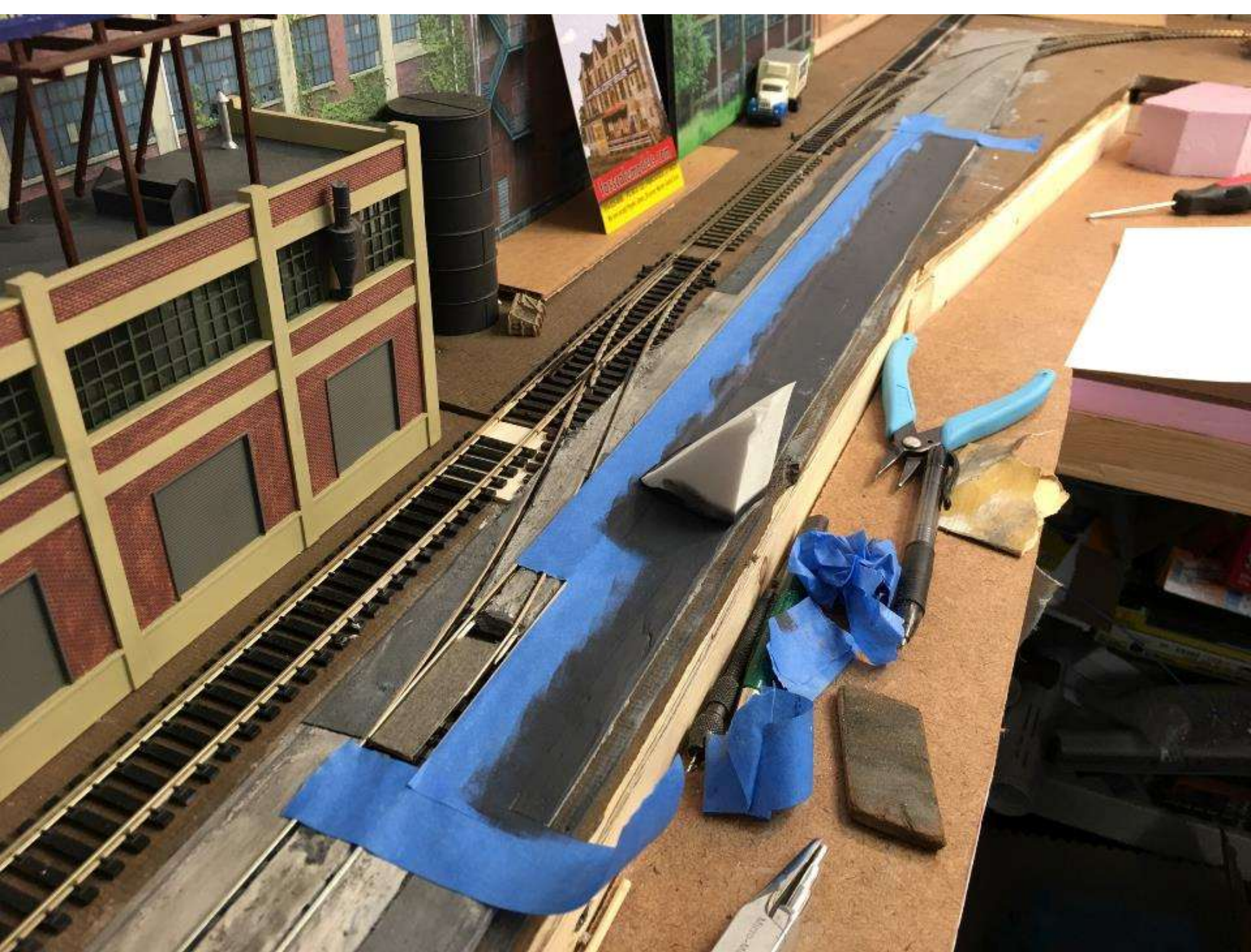




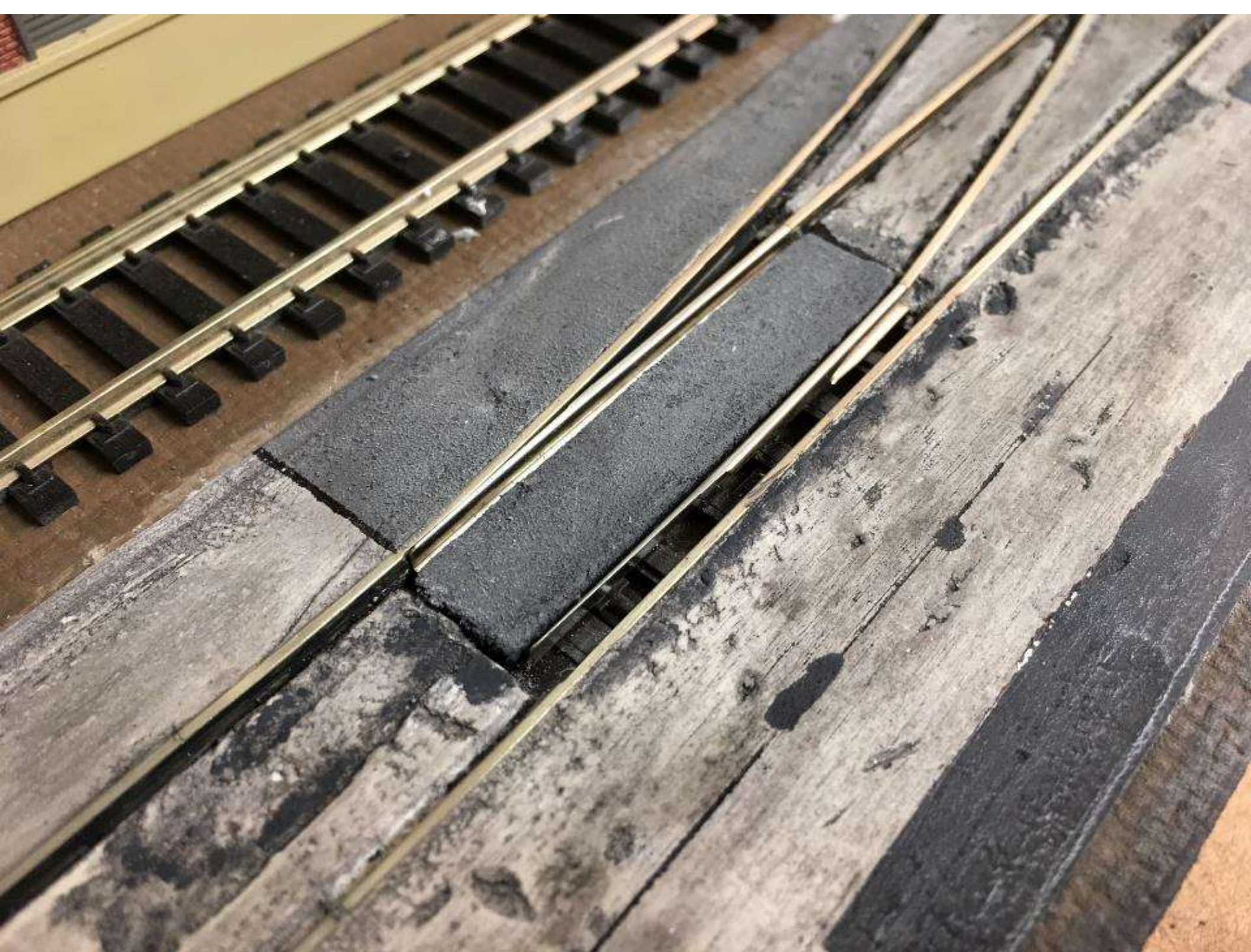




panimento
7, 2012 PLANO ENTERPRISES, INC. 0831
OR 1600
CROSS, GA 30091-7600-1800842-4107
DE IN USA/FABRIQUE AUX E.U.
HO EN E.U.U.
90 LABEL

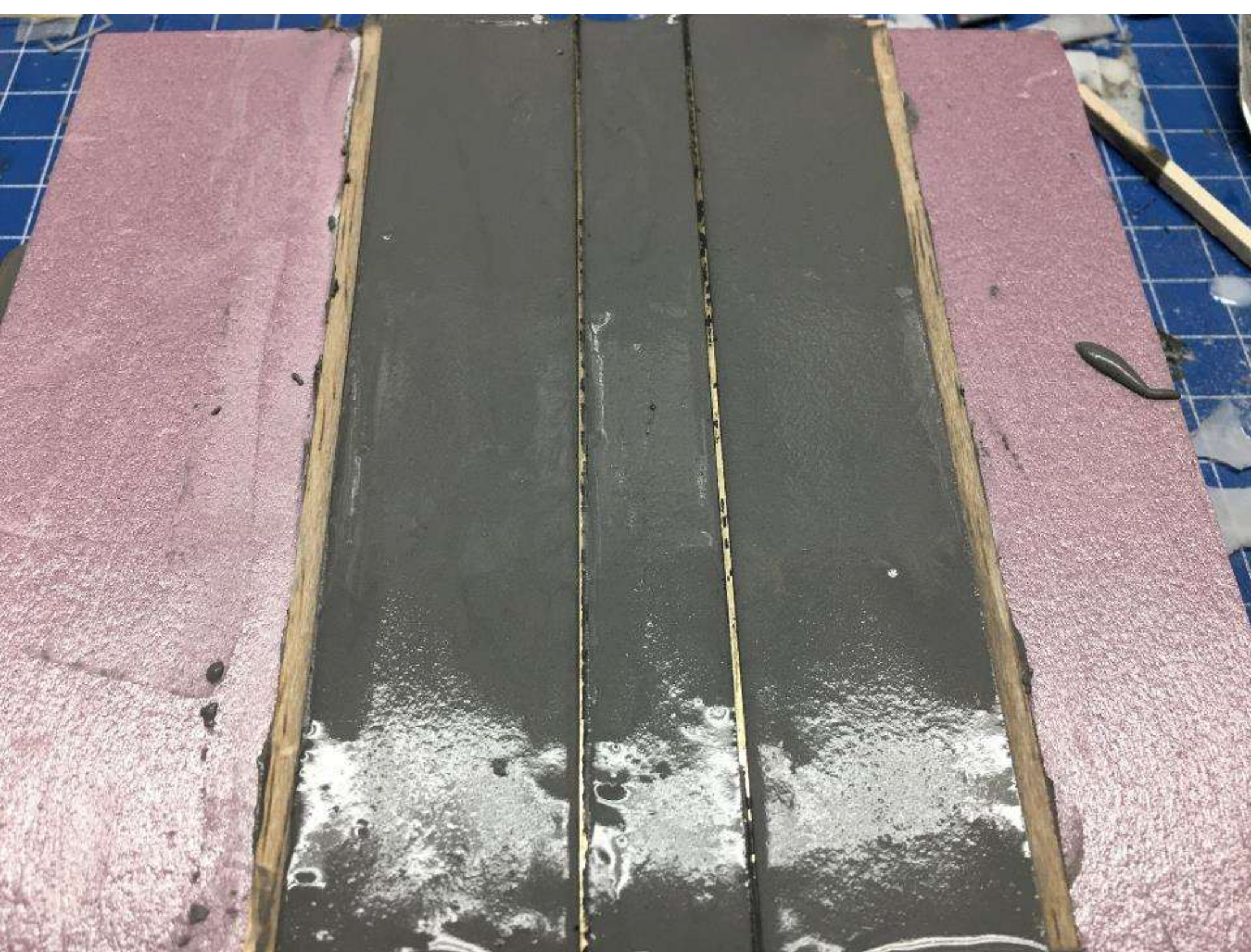








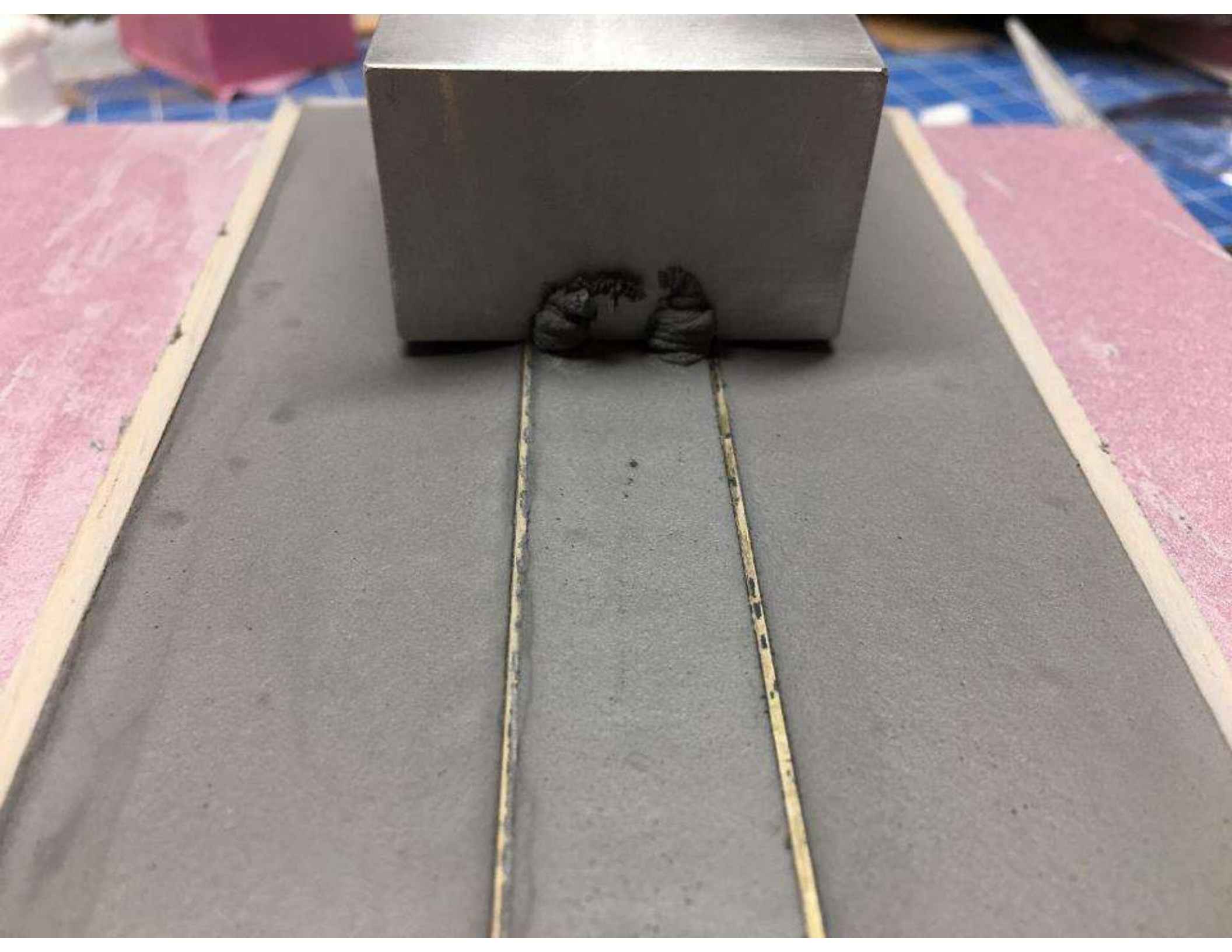




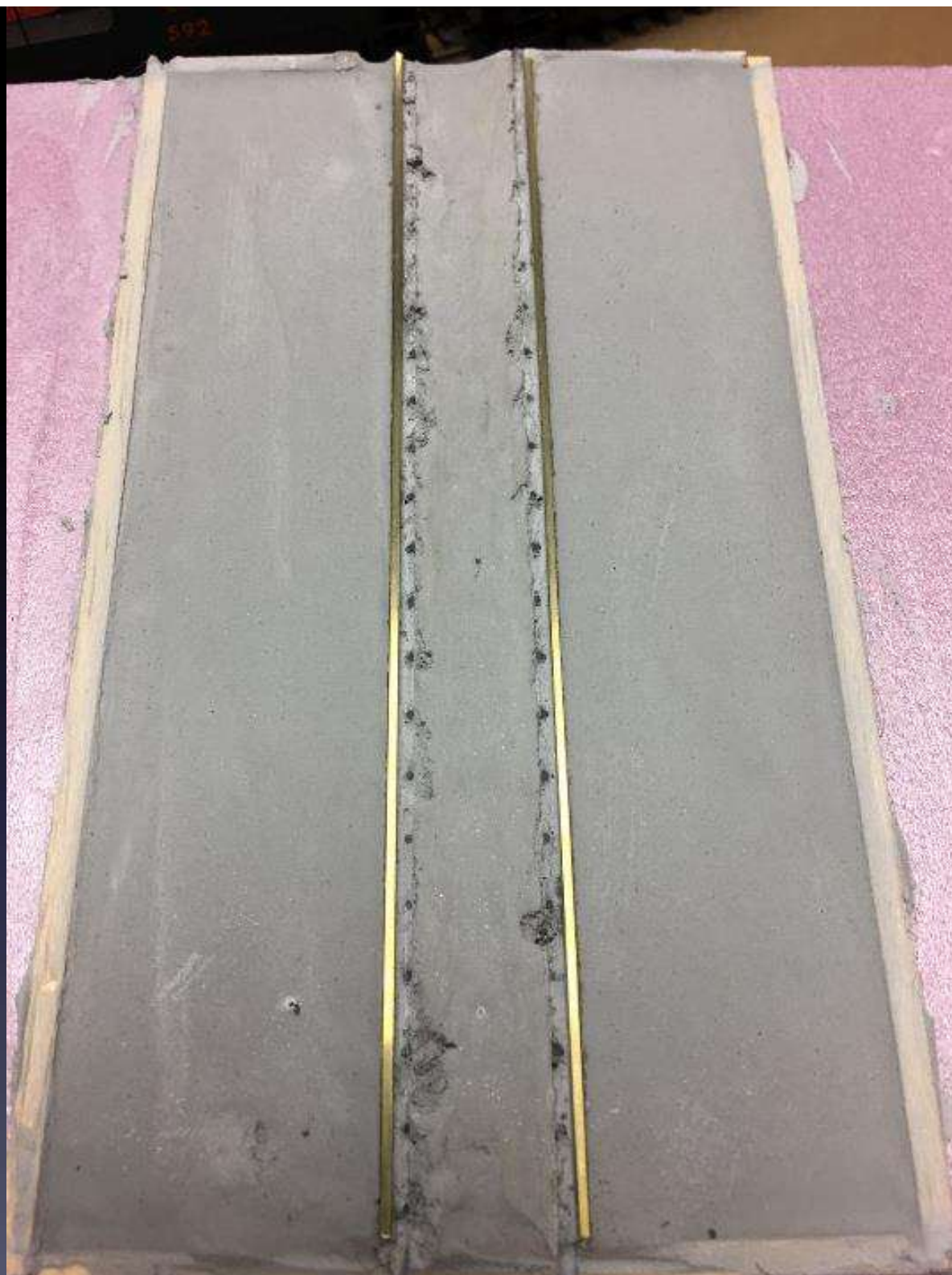
.540

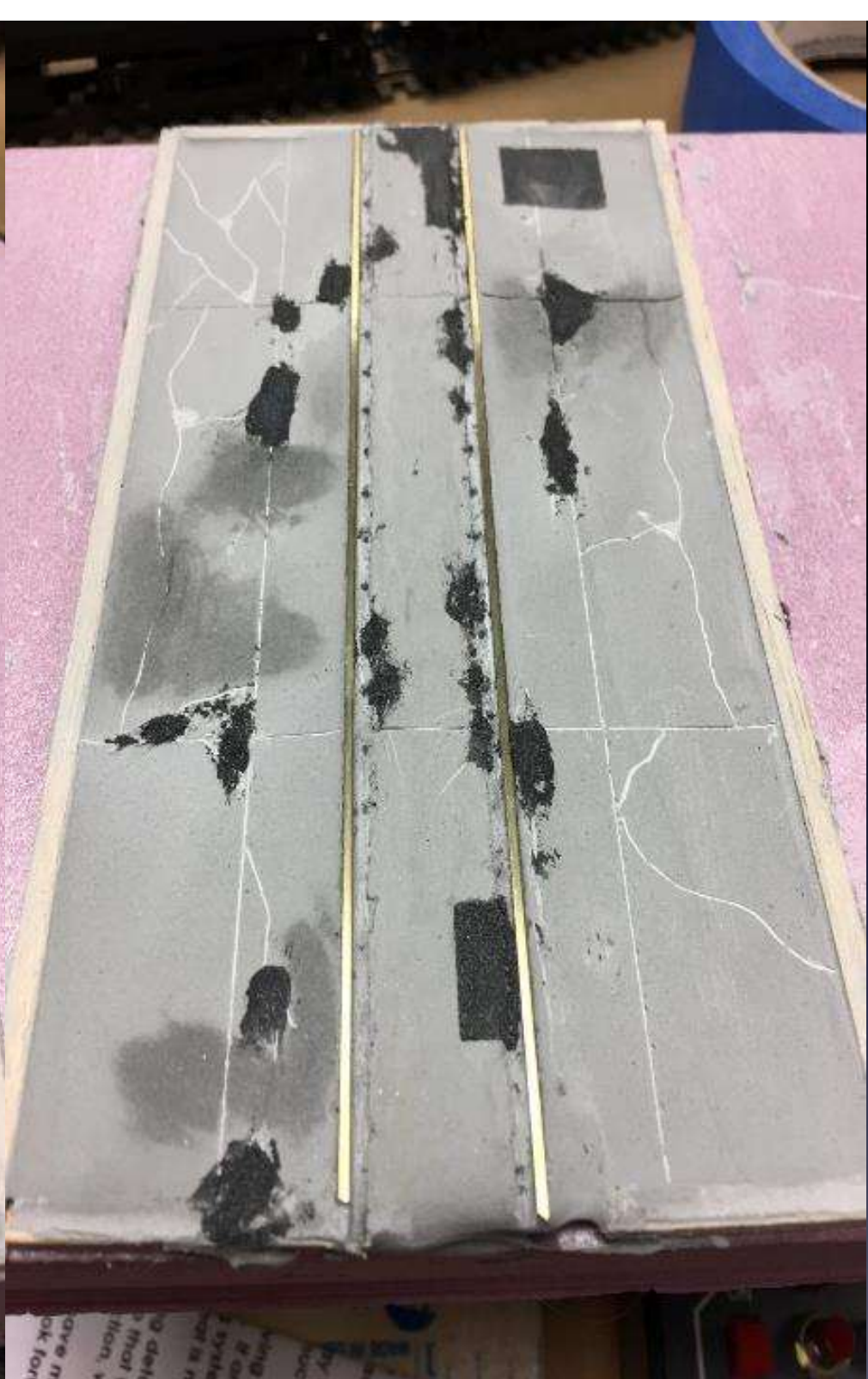
.490











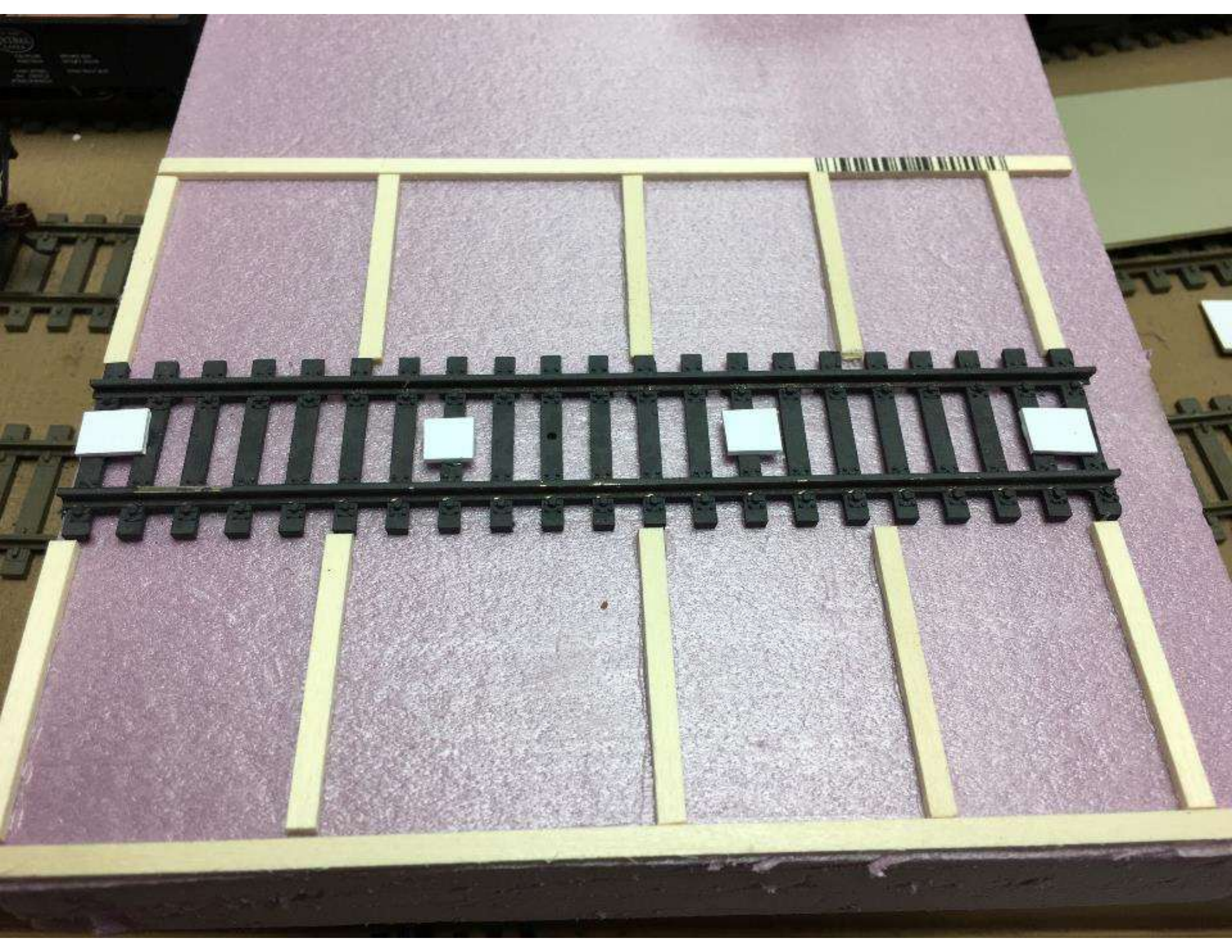


Adding Ground Cover



Technique #2

- **ITEMS NEEDED:**
- Matt Board (86212)
- .040 Styrene
- Aged Concrete Color Paint (Scale Coat 2 F2134)
- Weathering Powders (Dust bowl Brown, Light Rust, & Soot black)
- Micron Pens (02 and larger)
- Strip wood (1/8 x 1/16)
- Weld Bond Glue
- Hobby Knife (#11 blade)
- Metal Ruler



IMPORTANT

- Make templates first before cutting your matt board sections.
- Styrene for the center of the rails and matt board for the outer sections.
- Center is to be cut at about $\frac{1}{2}$ "



SCALECOAT PAINT

REMEMBER
"It's How You Finish
That Counts"!



Scalecoat II

F2134

Flat Aged Concrete

STUDIO
DECOR™

Michaels®

Mat Board / Passe-partout
Carton Apilado

24 in X 36 in / 60.9 cm X 91.4 cm

471916 02384 - 2016-02



Distributed by / Distribué par / Distribuido por
Michaels Stores, Inc., Irving, TX 75063

MADE IN USA / FABRIQUÉ AUX ÉTATS-UNIS HECHO EN EE.UU.

913

Item No.

Loc. Code

9040

I-8

PLAIN

.040" Thick (1 0 mm)

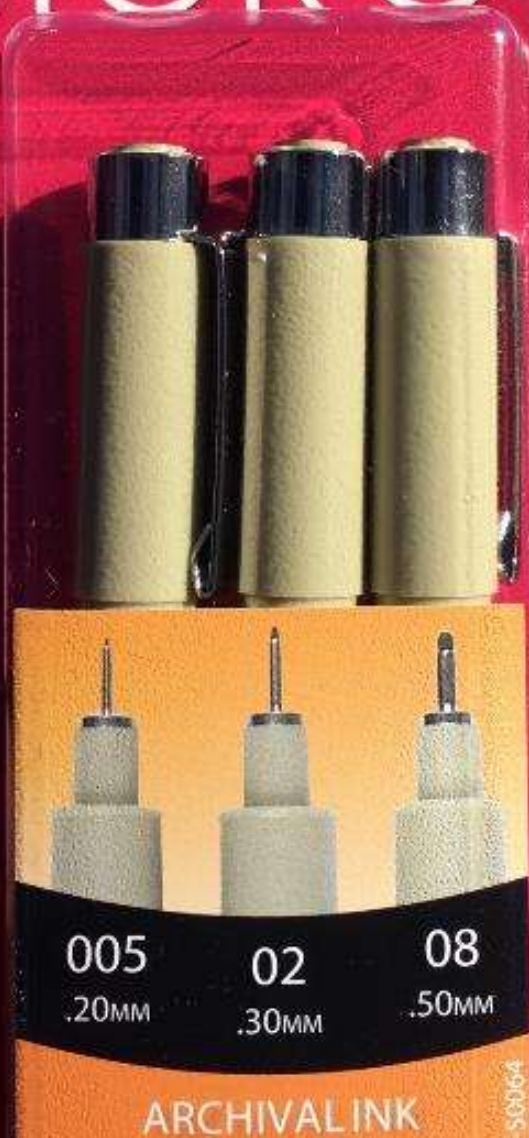
2 Sheets



3 PENS
STYLOS
PLUMAS

MICRON[®]

INK COLOR INDICATED BY CAP / COULEUR INDICUÉE SUR LE BOUCHON / COLORE



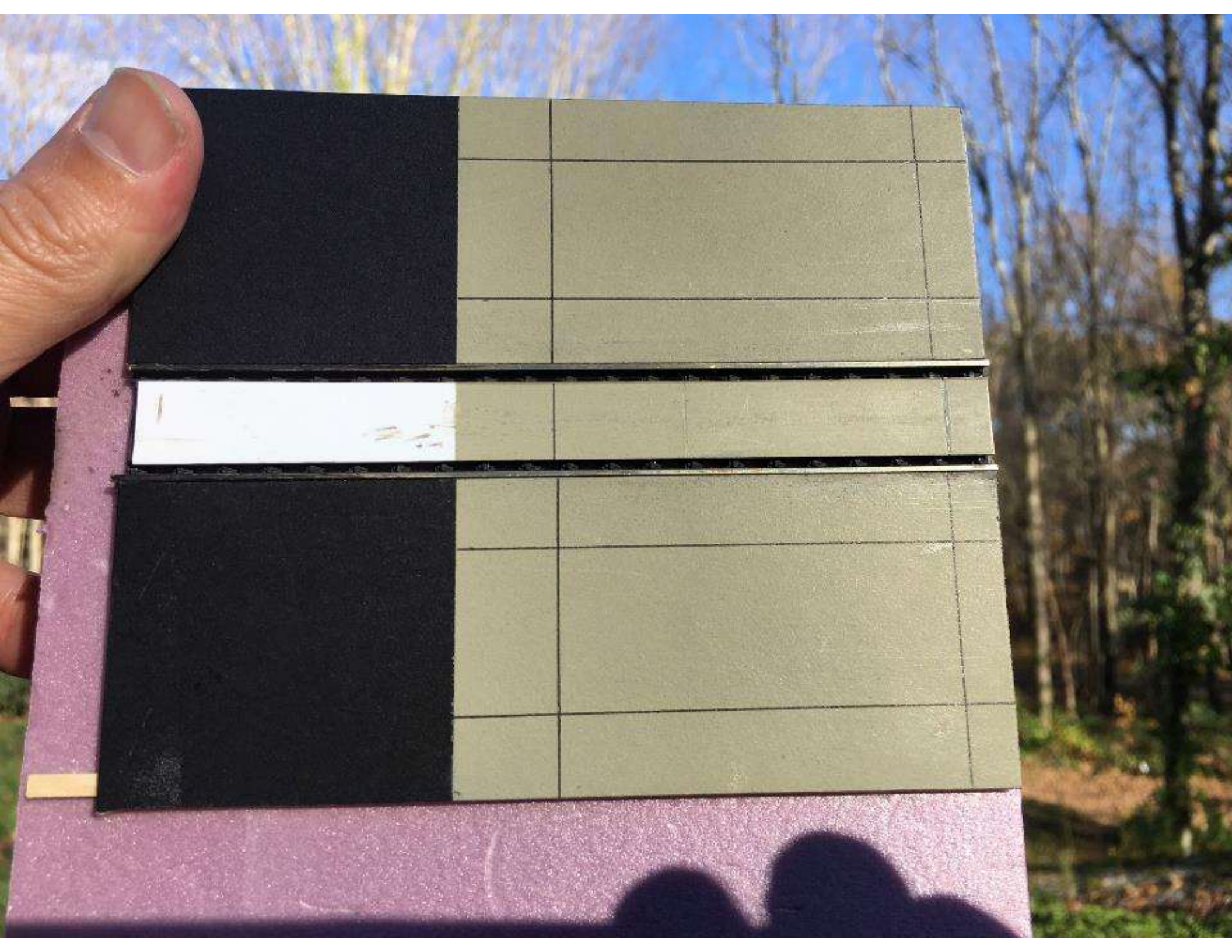
005
.20mm

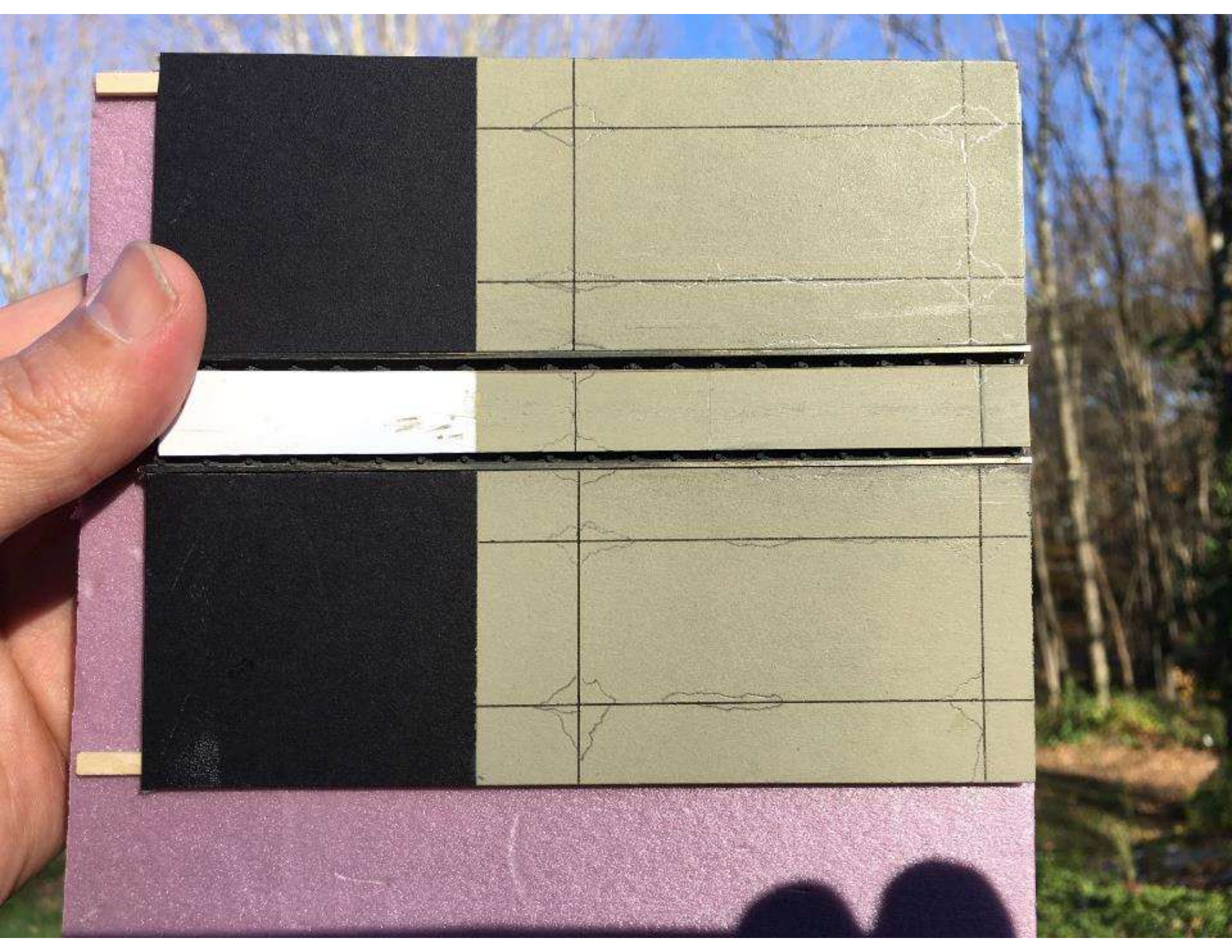
02
.30mm

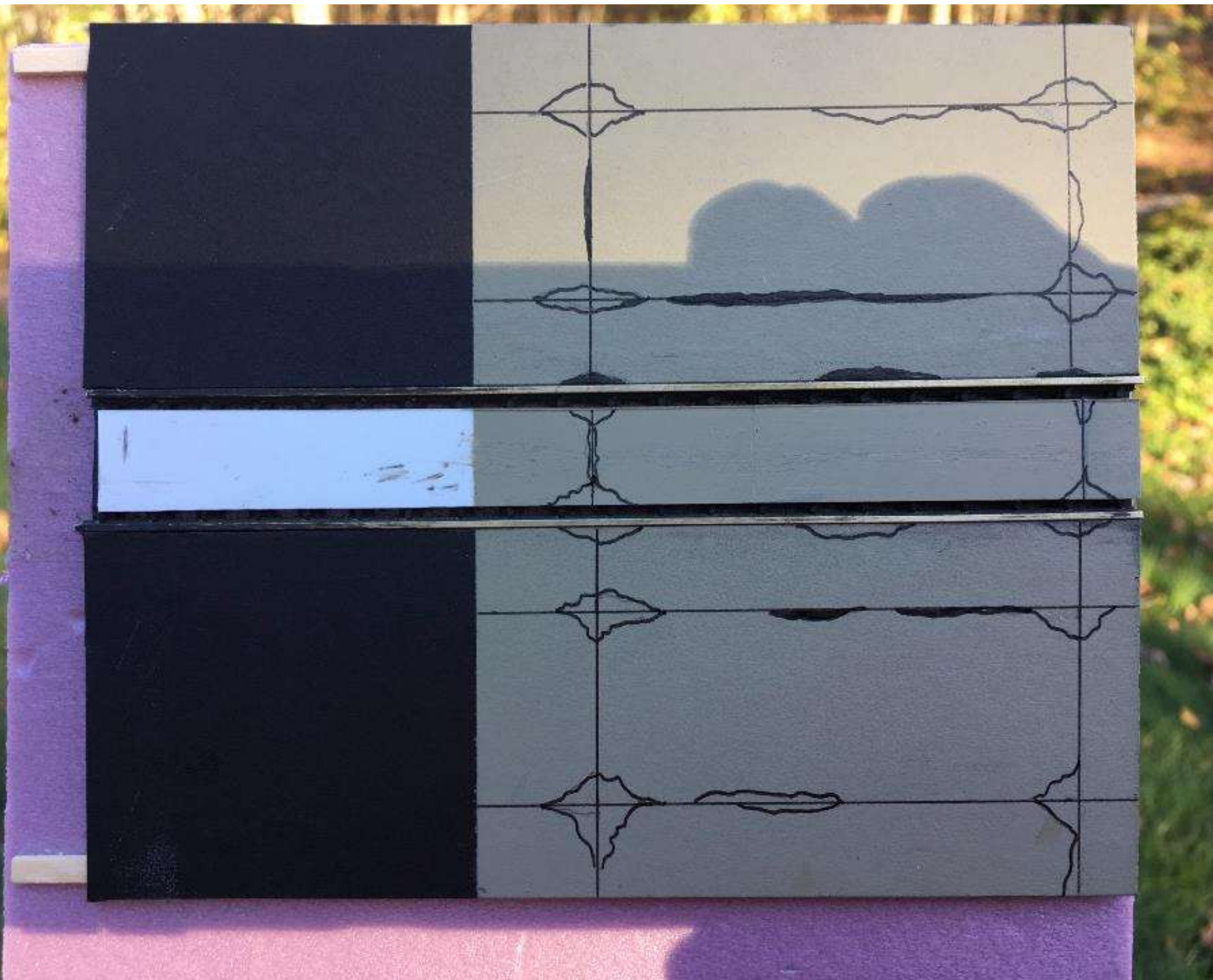
08
.50mm

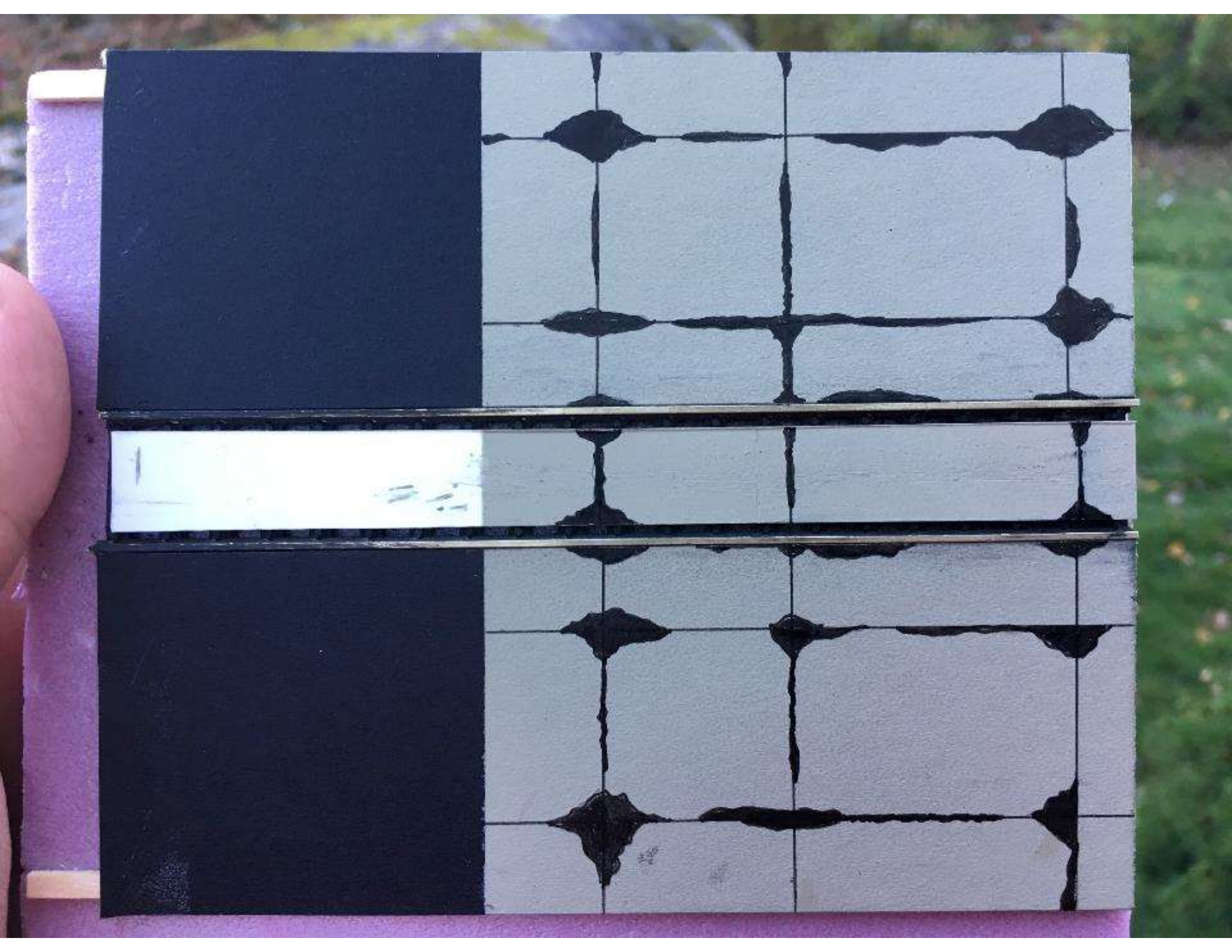
ARCHIVAL INK

50064











Any Questions?

